

From Rascafría to Oteruelo by The Egido Path

A historical path which allow us to enjoy a pleasant and comfortable walk between the both villages

Places of interest

1) The Egido Path

40° 54' 27" N
3° 52' 30" W



This path joins Rascafría with Oteruelo and discovers us the secrets of the valley heart. A livestock trail, where time has passed unhurried like the cattle that have walked over the years. Vegetable gardens, fields and meadows between old ashes which offer us light shadow and refuge. Fields with stones fences where leafy bushes appear. Hawthorn, blackthorn and other trees, which shelter deers, wild boars, and many small animals.

2) Forge Square and Shoeing Frame

40° 54' 57" N
3° 51' 16" W



The Forge Square is one of the most special places in Oteruelo, which takes us into another age. The hay lofts around the square, the shoeing frame and the cattle basin in the middle of the square, are symbols of the agriculture life. The shoeing frame has been used until few years ago for manipulating cattle, shoeing horses, branding cattle and treating animals.

3) Nuestra Señora de la Paz Church

40° 54' 58" N
3° 51' 07" W



With no doubt, the most significant element of Oteruelo, hallmark for its inhabitant, is the bell tower of Nuestra Señora de la Paz Church. Like the baptismal font, both have remained since the 12th c. until nowadays, while the rest of the Church suffered many damages and was completely rebuilt in the middle of 20th c., modifying its original floor.

4) Luis Feito Gallery

40° 55' 05" N
3° 51' 17" W



Luis Feito Gallery is placed besides old school at the beginning of the village. The gallery holds part of the paintings that have been donated by the artist to Oteruelo del Valle, where his mother was born. Since 2002 the collection has been increased to more than 150 paintings which create an unique collection where all his artistic periods are represent.

Luis Feito, founder of "Grupo el Paso", member of the Royal Academy of Arts of San Fernando holds countless awards, medals, honours. His paintings are showed in the main contemporary Museum of the world.

The exhibition is periodically renewed and can be visited. Get information about its timetable at the Rascafría Council or the Tourism Information Center.



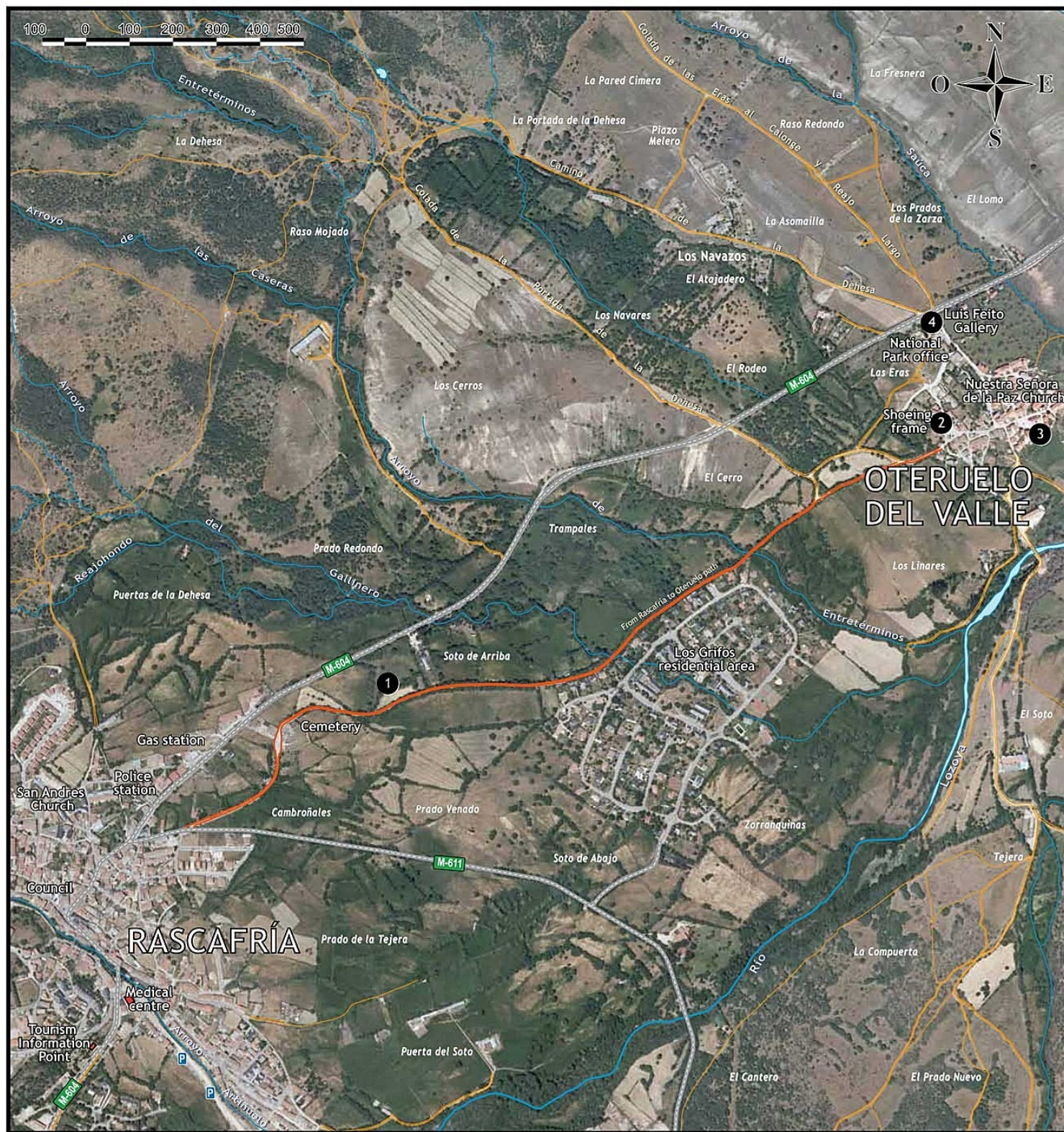
Scope and legend of the map



- 5 Places of interest
- Rivers
- Roads
- Tracks and Paths

Sketch of the main elements on the orthophoto.

Not all the ways and paths are reflected. Respect the property right and keep every gates in cross the path closed.





How to get

To get to Rascafría there are several choices:

By Car:

- From A1, taking in Lozoyuela (km69) the M-604 road.
- By M-611, Through Miraflores de la Sierra, crossing Morcuera Pass.
- By M-601, to Navacerrada Pass and Cotos Pass (M-604).
- By M-637, From Segovia, crossing Navafria Pass to Lozoya, linking with the M-604.

By Bus: Departing from Plaza de Castilla bus station, you should take the bus 194, that ends in Rascafría, or the shuttle bus 194A, starts in Buitrago del Lozoya and go over the Lozoya Valley.

RASCAFRÍA

A **gastronomic** and **accommodation** offer for every taste, with leisure activities and active-tourism like alpine and cross-country skiing, hiking, equestrian routes, etc.

A privileged natural and cultural environment



From Rascafría to Oteruelo by The Egido Path

The **Egido Path** is the nicest way to reach **Oteruelo** from **Rascafría**. A tour of barely 2kms, with no slope, through one of the most symbolic natural sceneries of The High Lozoya Valley. **A walk where you can feel the calm in a kind environment.**

Walking along, we will find out **vegetables gardens** and **fields** from the **deepest of the Valley**, with **ashes** and **oak trees** which shade, and occasionally allow us to contemplate hills confined in The Pautar Valley, Cuerda Larga and Carpetanos Hills, with **Peñalara** dominating the tops and the heart of Guadarrama. A scenery of small fields enclosed by bushes and small trees, drawing an **unique** and



characteristic landscape of these highland villages. A scene kept with effort, daily work and know-how of its neighbours, where the **natural resources** utilization perfectly combine with the conservation of the **nature**, where roe deers, wild boars and many animals live together with cattle.



A privileged natural and cultural environment

www.rascafría.org
www.turismomadrid.es

Council of Rascafría

Phone number 91 869 11 17
rascafría@rascafría.org



Comunidad de Madrid

